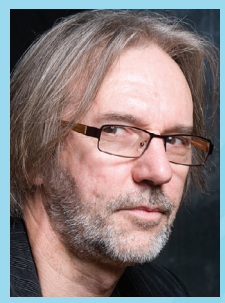


FRANÇOIS RACINE

STAGE DIRECTOR



Dido and Aeneas with Theatre Bleue, Switzerland –

"From an aesthetic point of view, François Racine's staging is a gem."

Denise de Ceuninck, L'Express

Les Dialogues des Carmelites with University of Montréal –

"Once more, the University of Montréal offers the sound and substance of music theatre presented with taste, cleverness, delicacy and efficiency. Both the set designer Carl Pelletier and the lighting designer Nicolas Descoteaux provided a functional setting that was just right for the excellent director François Racine. To do so much so well with such simple resources is brilliant."

Christophe Huss, Le Devoir

BIOGRAPHY

Canadian director François Racine is firmly established as one of the most visionary leaders on today's opera scene, engaged by companies throughout North America and beyond. François Racine has a long association with Pacific Opera Victoria (*Carmen*, *Madama Butterfly*, *La bohème*) as well as the Canadian Opera Company (*Un Ballo in Maschera*, *Carmen*, *Norma*), and L'Opéra de Montréal (*Rigoletto*, *Macbeth*, *Aida*). In recent seasons, François has directed *La bohème* at Edmonton Opera, *Faust* for Vancouver Opera, *Nabucco* at Seattle Opera, and *Rigoletto* for L'Opéra de Québec.

He has directed concert versions of operas with the Orchestre Classique de Montréal and Orchestre de l'Agora. François' collaboration with Robert Lepage on productions of *Erwartung* and *Bluebeard's Castle* brought him to Edinburgh, Melbourne and Hong Kong Festivals. He has directed opera productions at Université de Montréal, the Opera Studio of McGill University, Université d'Ottawa, Cincinnati Conservatory of Music, Jeunesses Musicales Canada, the Atelier Lyrique of Opéra de Montréal, and Canadian Opera Company's Ensemble Studio. François currently teaches an adapted approach to dramatic acting for opera singers, primarily at Université de Montréal.

In collaboration with Kent Nagano and L'Orchestre Symphonique de Montréal, Mr. Racine staged concert versions of *Tannhauser*, *Norma*, *La Sonnambula* and *Saint-François d'Assise* (Messiaen), and with Yannick Nezet-Seguín and Orchestre Metropolitain at Orford Art Centre, he staged *La Clemenza di Tito*.

This season, he directs a concert version of *Die Fledermaus* with new dialogue for Stratford Symphony Orchestra, and returns to Opéra de Montréal to direct their spring production of *La bohème*.

SELECTED ENGAGEMENTS

OPERA

Pacific Opera Victoria

Carmen, *Madama Butterfly*, *La Bohème*

Canadian Opera Company

Un Ballo in Maschera, *Carmen*, *Norma*

L'Opéra de Montréal

Rigoletto, *Macbeth*, *Werther*

Seattle Opera

Nabucco



Dido and Aeneas with Theatre Bleue, Switzerland

Domoney ARTISTS
MANAGEMENT

Kathy J Domoney, Director
23 Northview Ave Toronto ON M1N1V9
416.892.4382 kathy@domoneyartists.com
www.domoneyartists.com